



Conditional Access with Lookout & Intune

Mark Riley, OCG Principal Architect
Brandon Hatfield, Lookout Security Engineer

November 15, 2016

Delivering **long-term, value-added** services for Identity & Access Management, Identity Governance, and Data Protection



Why OCG?

- ➔ 15+ year track record deploying identity and hybrid-identity solutions
- ➔ Over 7 million Office 365 seats deployed
- ➔ Microsoft Identity Partner of the Year 2013-2014, EMS Partner of the Year 2015
- ➔ Deep connections with Microsoft Cloud engineering team

Planning & Assessment

Azure AD POC
Intune POC
RMS POC

Envisioning workshops

Readiness assessments

Security reviews

AD health-checks

Training courses

Deployment Services

Azure AD pilots
AD FS pilots
Intune pilots
RMS pilots

Office 365
integration/migration

FIM/MIM integration

Azure Marketplace
Application Integration

SMS integration

Managed Services

Help desk support

System Center
integration

24x7 monitoring,
alerting & logging

Maintenance

3rd party application
management

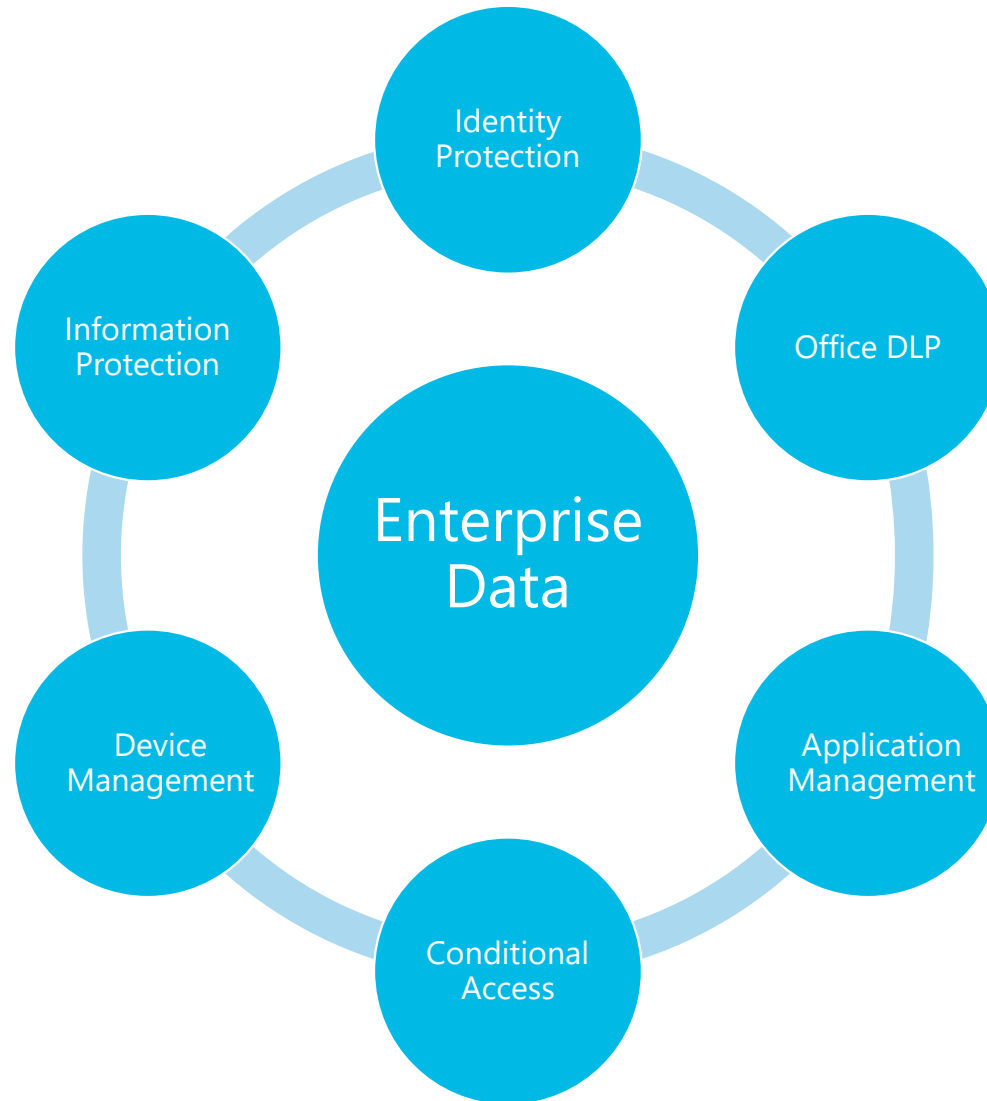
Training courses



Agenda

- Conditional Access overview
- Intune Conditional Access features
- Introduction to Lookout
- Lookout and Intune integration for Conditional Access
- Demo
- Q&A

The New Firewall



Conditional Access Overview



- Conditional Access – Variable User Experience
- React to various inputs/states to determine users' level of access
 - Location
 - Device
 - Resource/App being accessed
 - Domain Joined/Registered
- May apply Multi-Factor Authentication (MFA)
- May deny access based on state of settings

Conditional Access

IP Restrictions

- Inside/Outside

Enhanced Authentication

- Multi-Factor
- Device Registration

Managed Device

- EMM
- GPOs

Overview

- Many of these settings may be applied in a pure cloud environment
- More granular control may be available for some settings in On-Premises Federation (e.g. ADFS)
- Microsoft extending Conditional Access from Mobile Devices (EAS) to Rich clients as well (Outlook Anywhere)
- Currently configured in the Intune Console
 - Even in SCCM Integrated environments

Mobile Device Management (MDM)

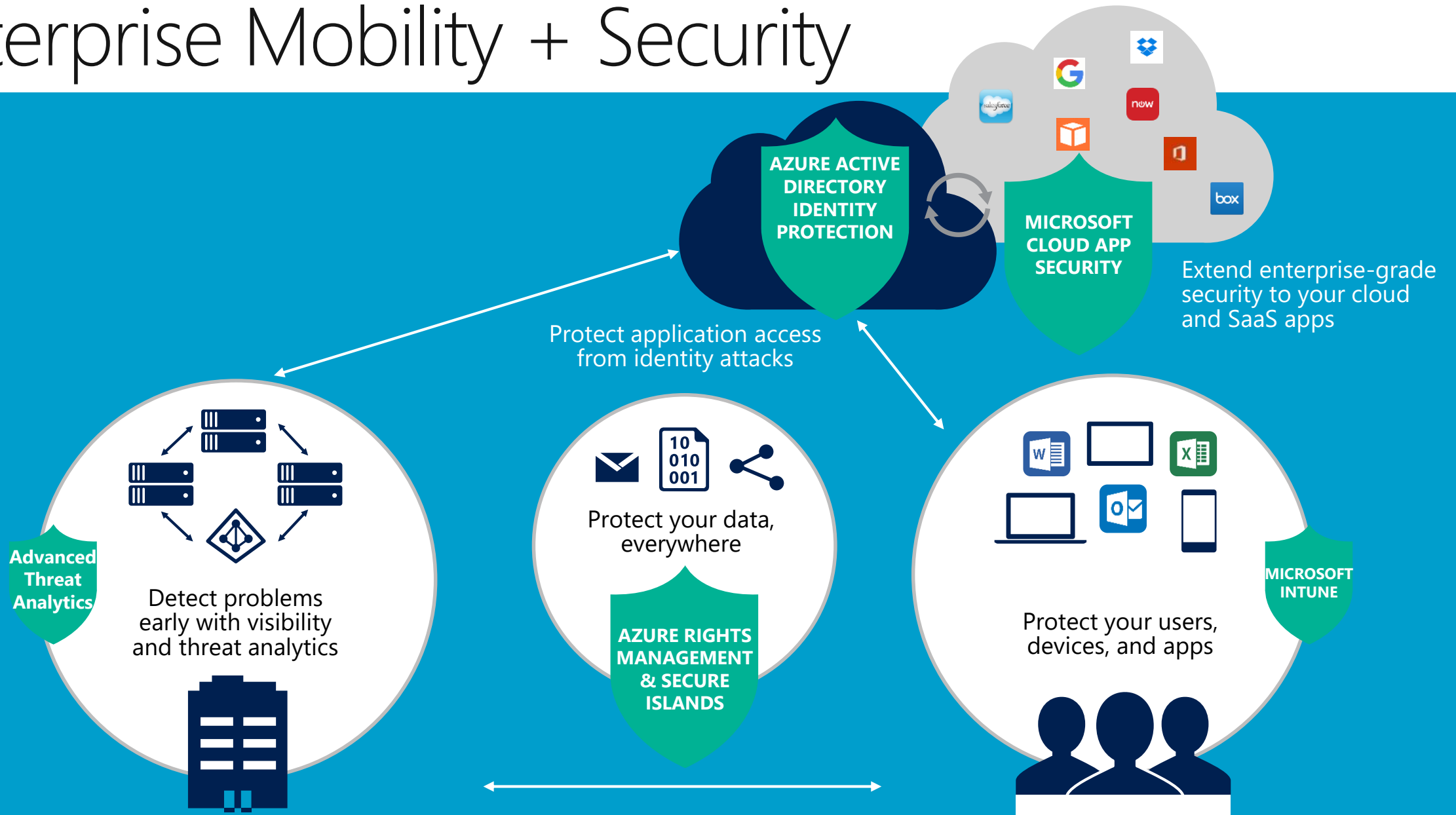


- Compliance Policies
- Configuration Policies
 - Wi-Fi Configuration
 - VPN Configuration
- Application Distribution
- Certificate Distribution
 - Root CA certificates
 - User certificates
- Custom Configurations
- Selective Wipe
- Full Wipe
- Asset Tracking
- Reporting
- App Configuration*



Demo: Intune User Enrollment

Enterprise Mobility + Security





- Founded in 2007
- Focused exclusively on securing mobility
- Security for organizations and consumers
- Worldwide distribution and support

OUR PARTNERS



The Lookout Security Cloud

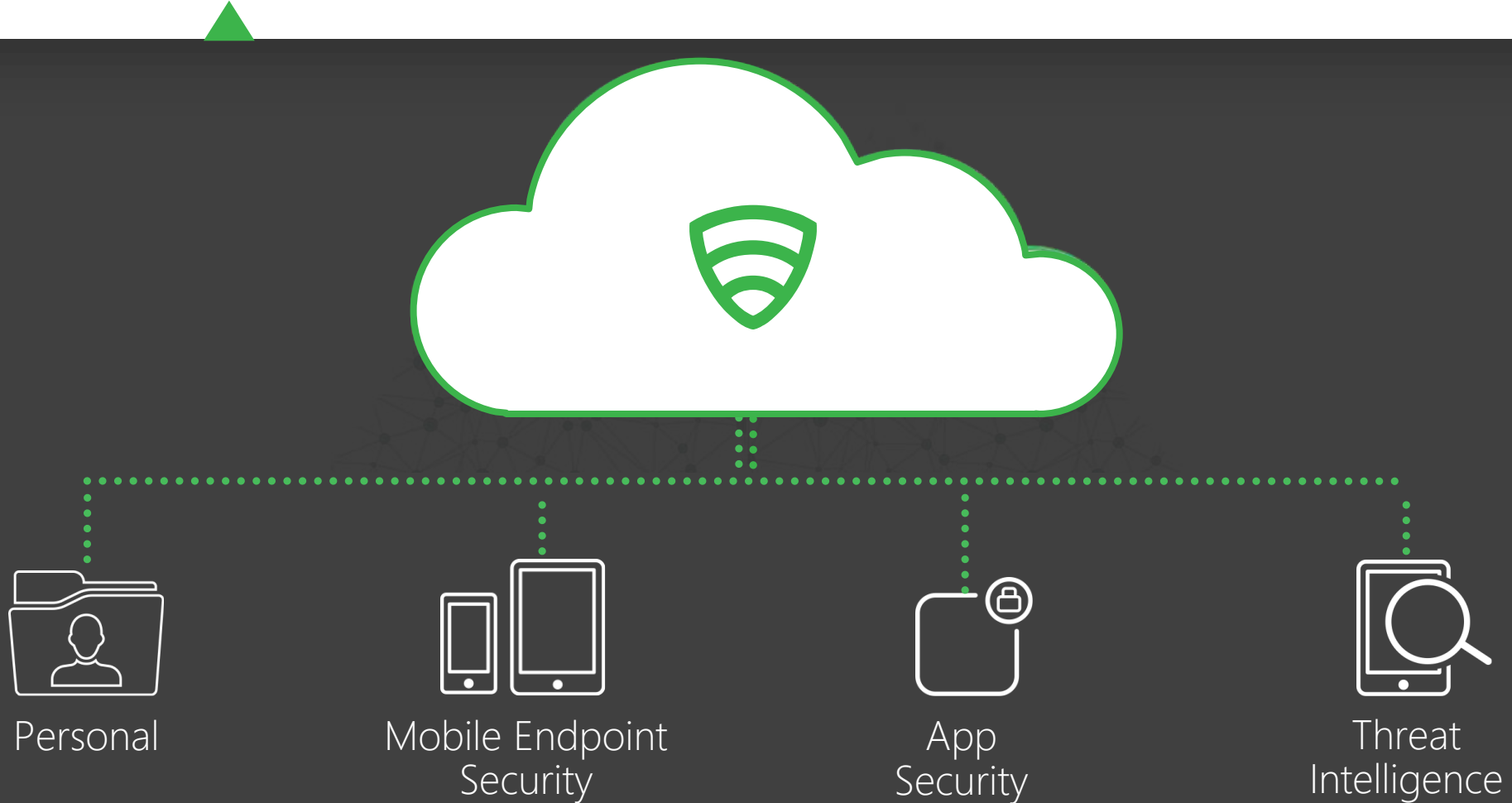
Mobile First
cloud-delivered security



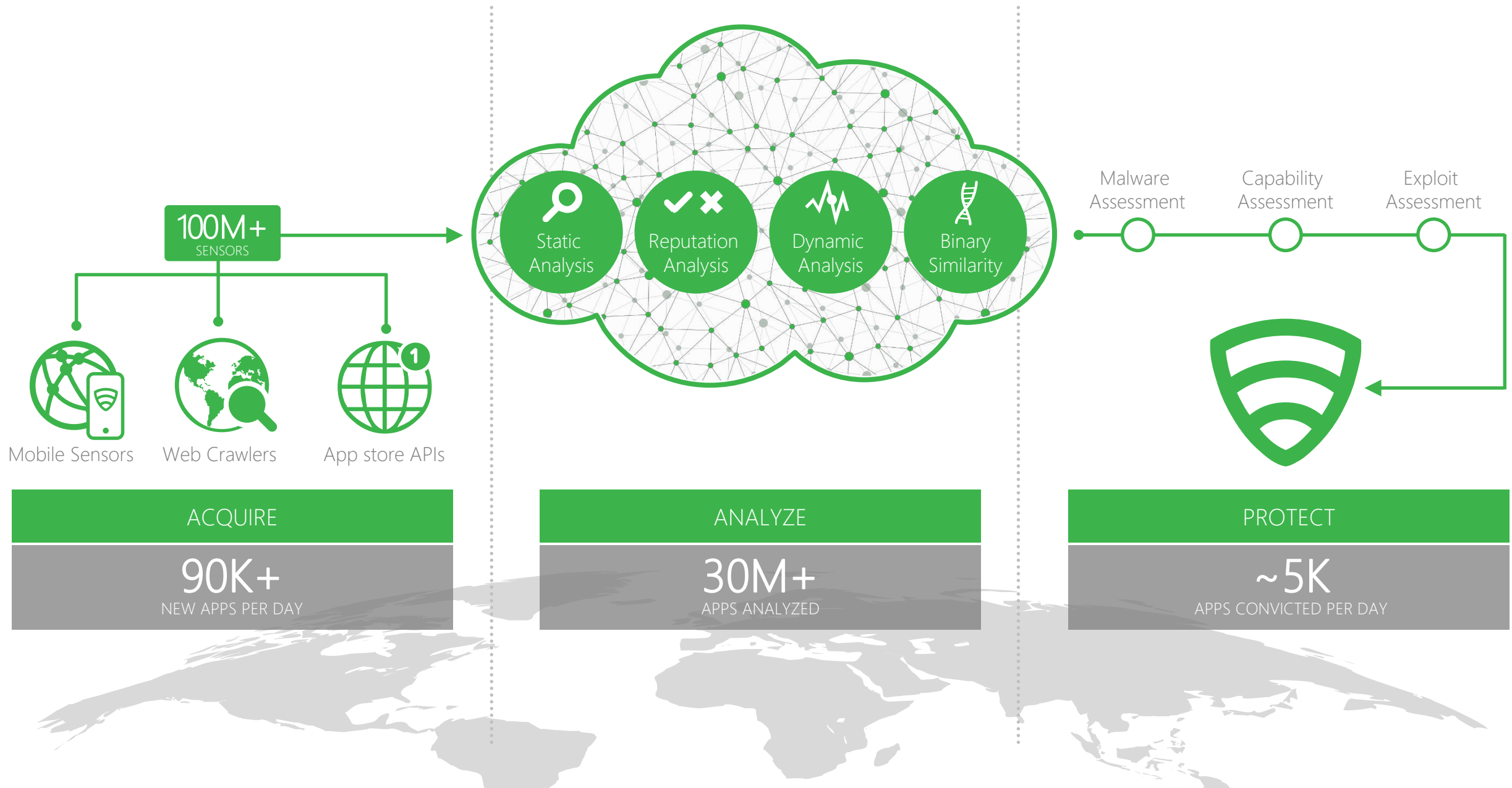
100 Million+
mobile sensors



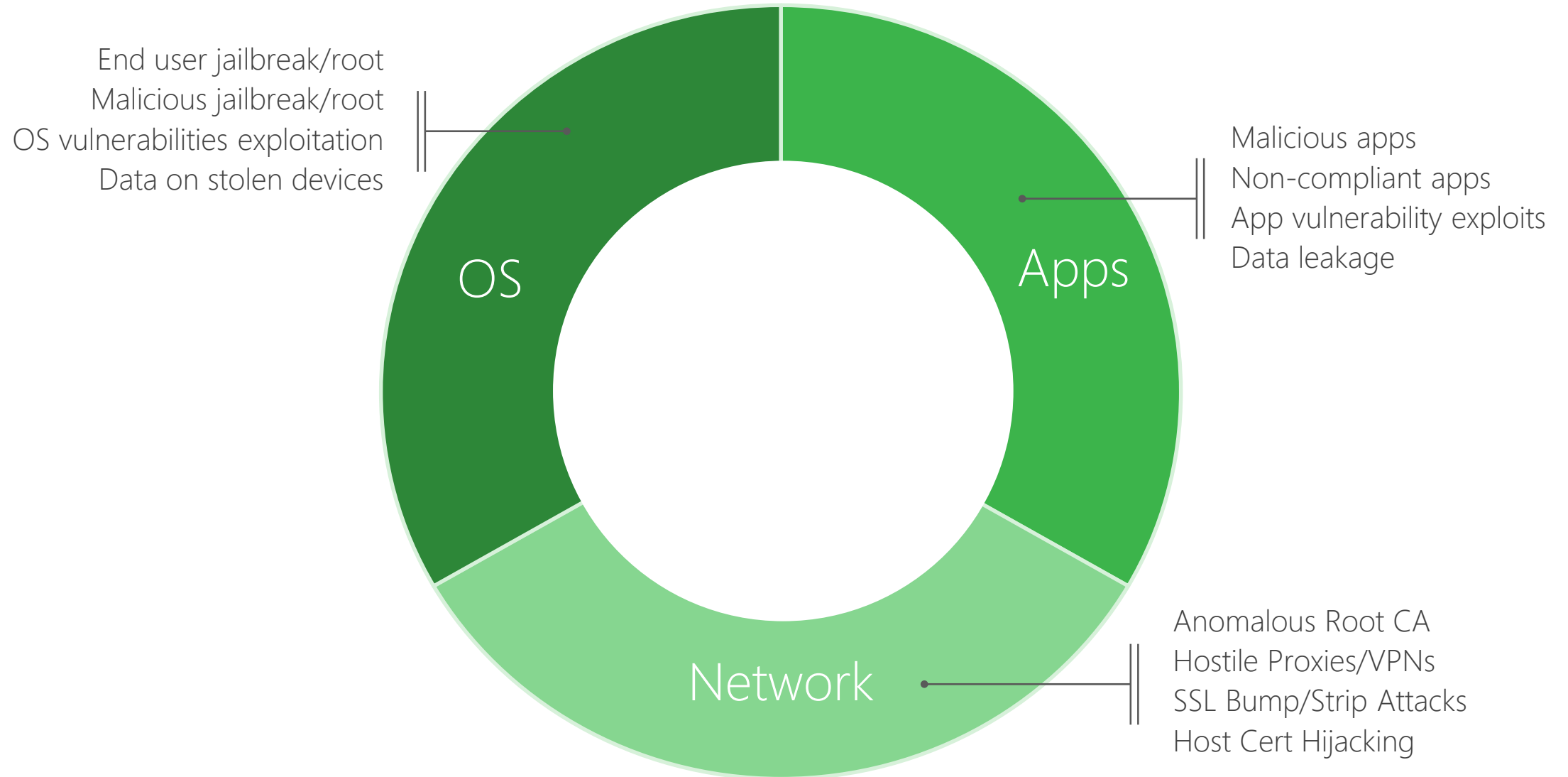
Machine Intelligence
driven decisions



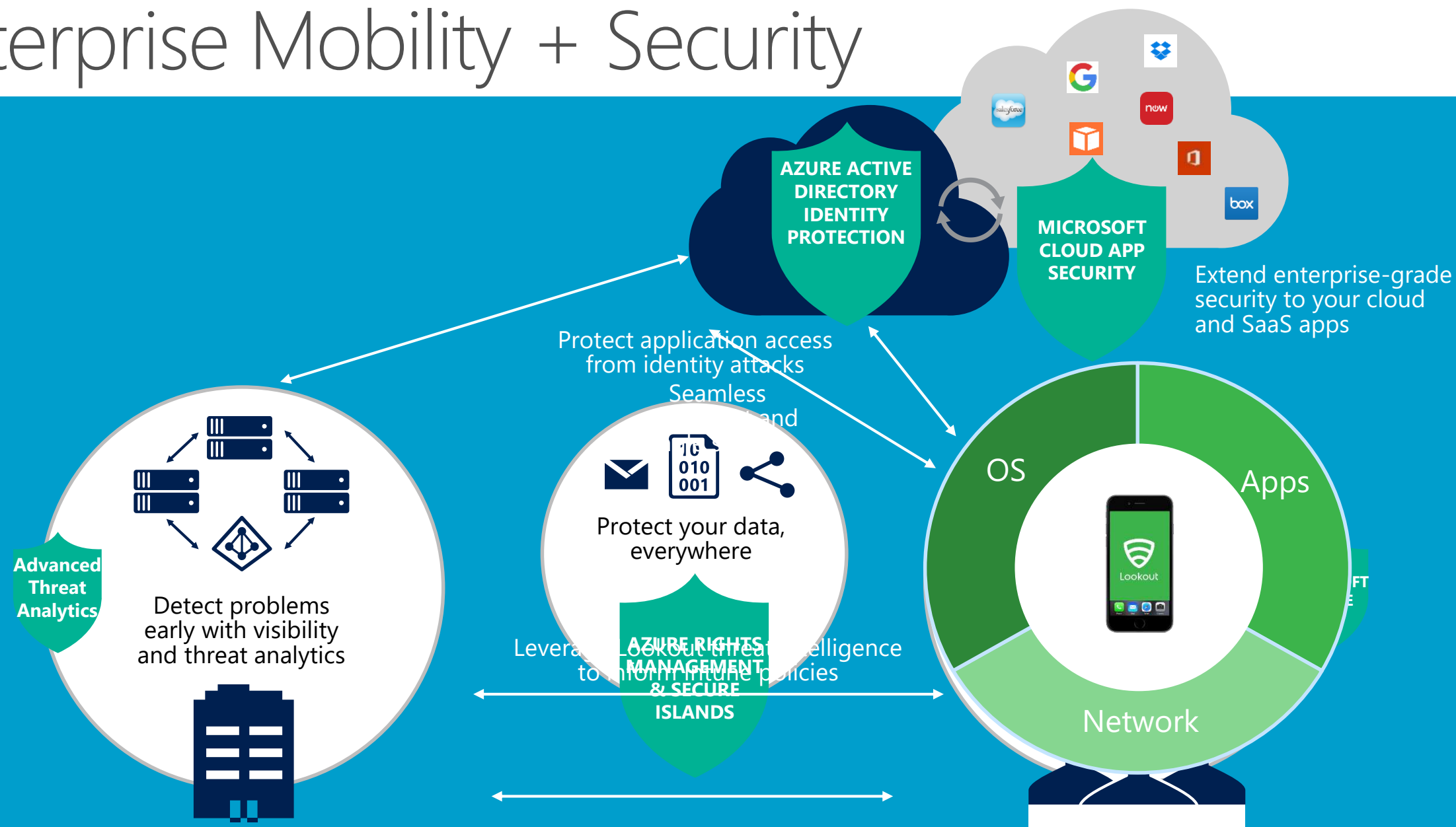
So We Can Approach Mobile Security as a Big Data Problem



Mobile Endpoint Security Protections



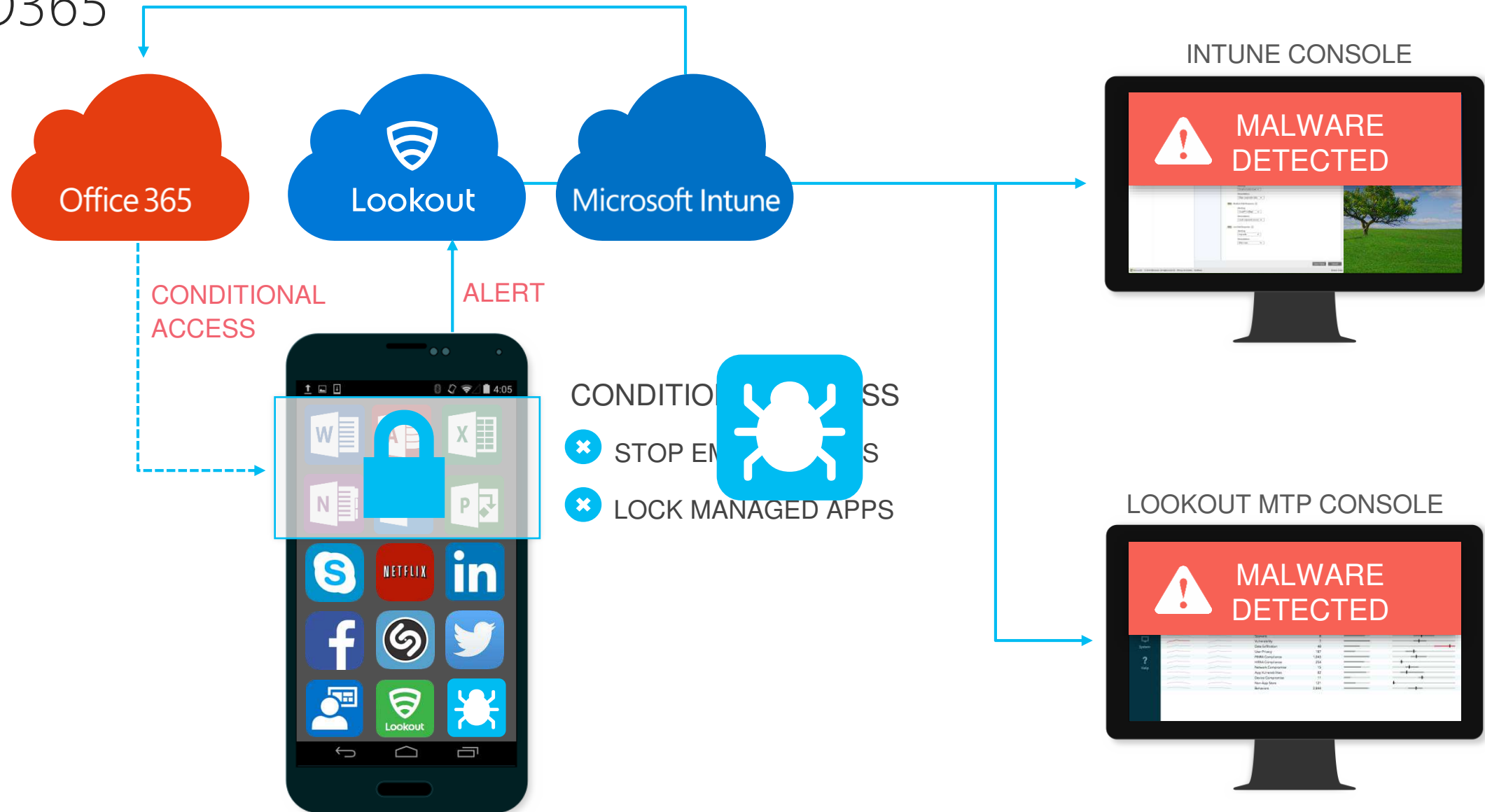
Enterprise Mobility + Security



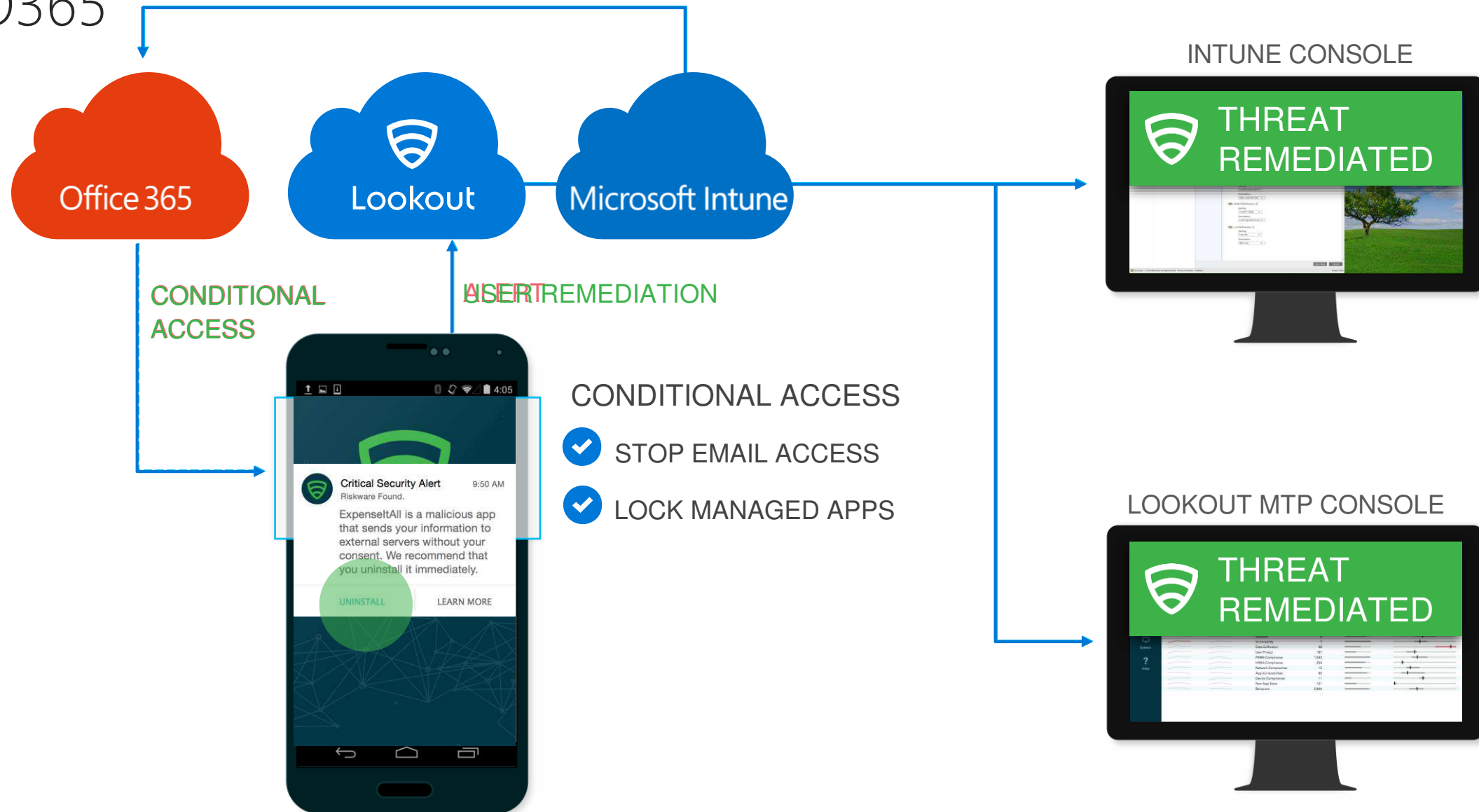


Risk-Based Conditional Access

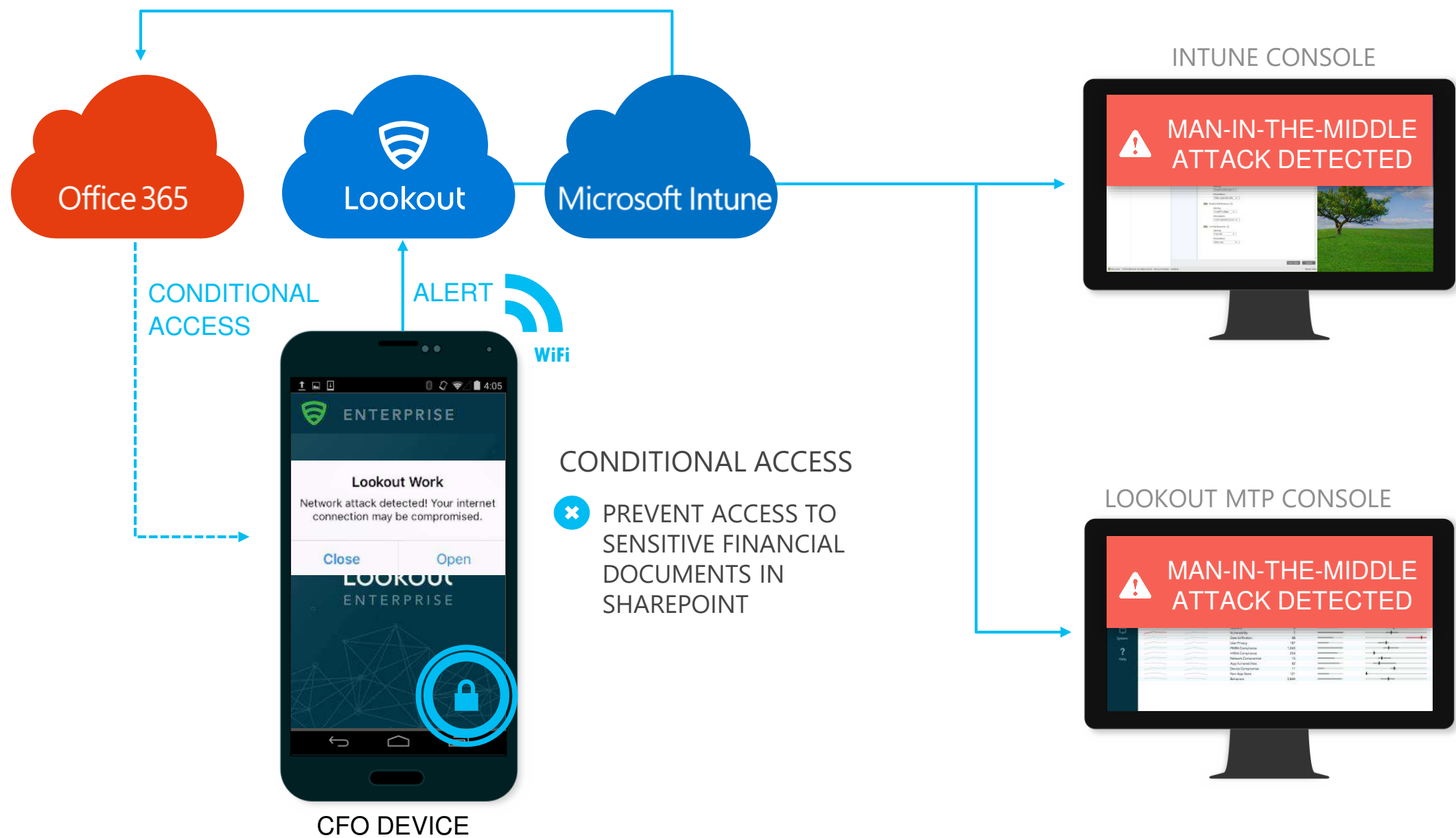
SCENARIO 1: App-Based Threat Triggers Conditional Access to O365



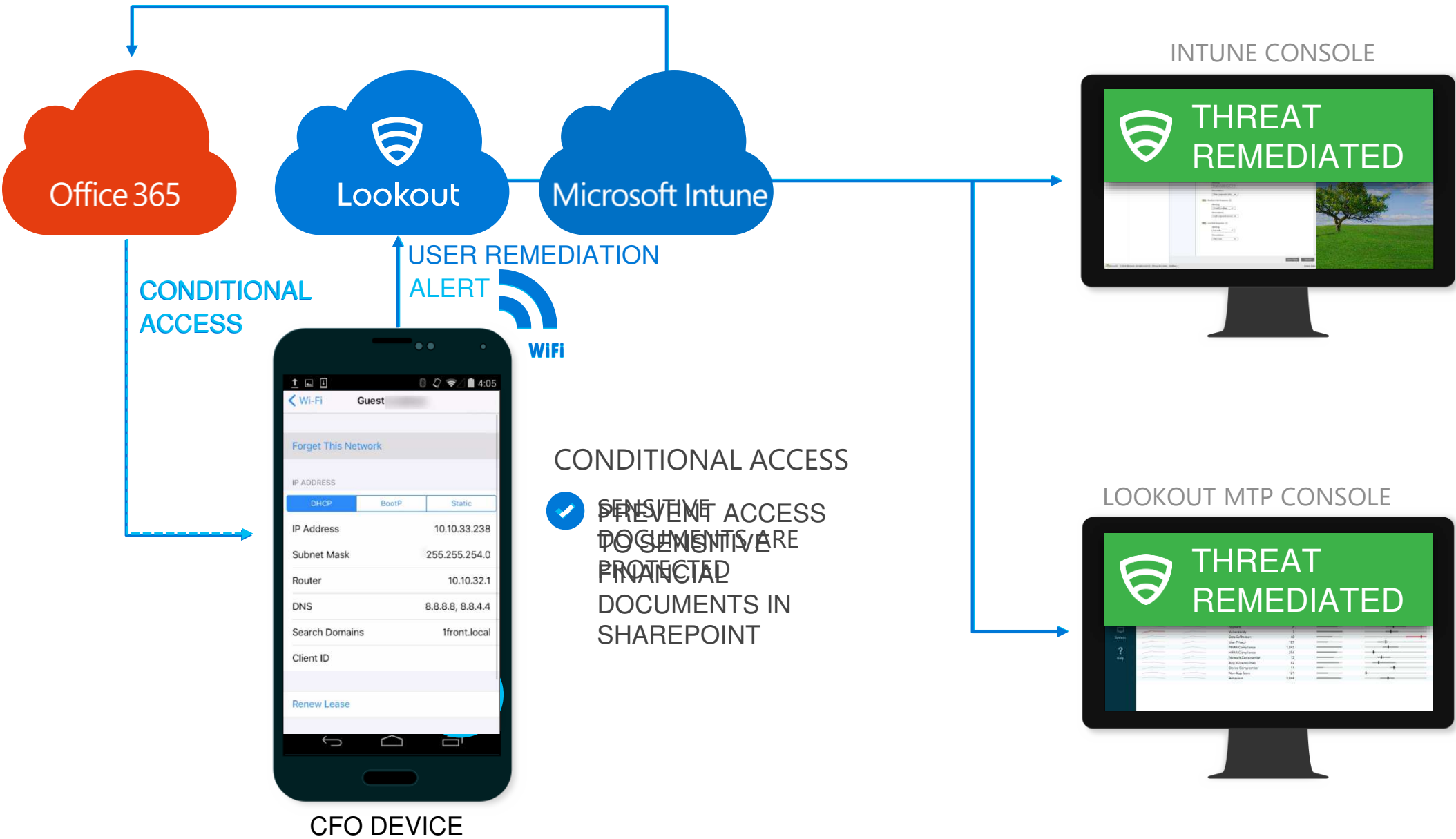
SCENARIO 1: App-Based Threat Triggers Conditional Access to O365



SCENARIO 2: Network-Based Threat Triggers Conditional Access to SharePoint



SCENARIO 2: Network-Based Threat Triggers Conditional Access to SharePoint



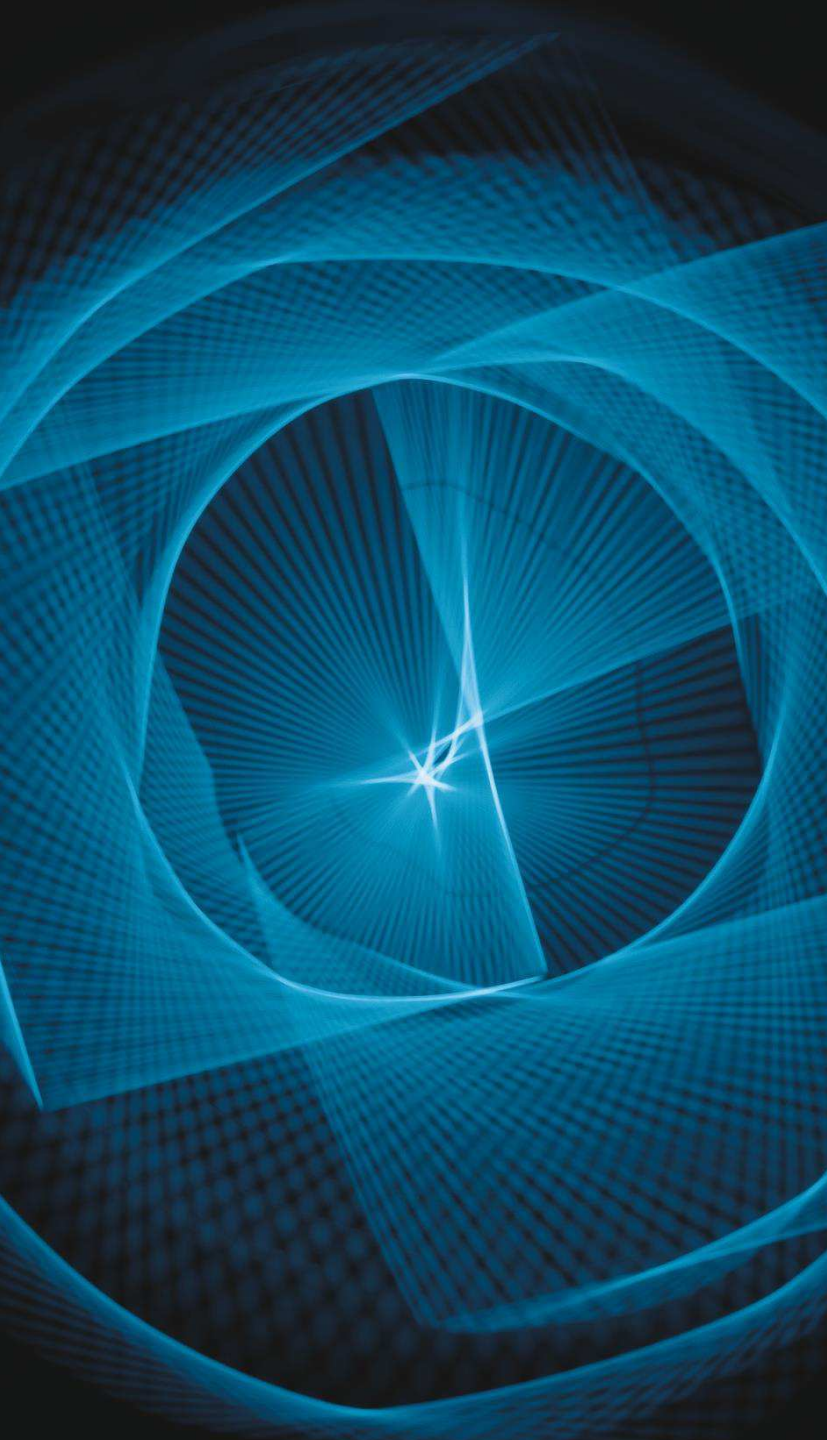


Enrolling Lookout (Demo)

Summary



- Lookout and Intune together represent cutting-edge technology in protecting mobile corporate data
- IP Restrictions
- Control access to SaaS apps
- Device Registration/Domain Join
- Control access to Exchange from Rich Clients (Outlook)
 - See our next webinar on Conditional Access December 15, 2016



Q&A

Upcoming Events

[OCG Events Page](#)



Topic	Presenter	Date	Type
Maximizing Microsoft Identity Manager in EDU	Hugh Simpson-Wells, OCG	12/1/16, 8:30am Pacific	Webinar
Conditional Access for Rich Clients	Mark Riley, OCG	12/15/16, 9am Pacific	Webinar
2017 Redmond Summit: Identity-Driven Security	Various OCG, Microsoft, partner, and industry speakers	May 9-11, 2017 Microsoft's Redmond Campus	In-person Summit

Follow Oxford Computer Group



Twitter



@OCGUSOfficial

Facebook



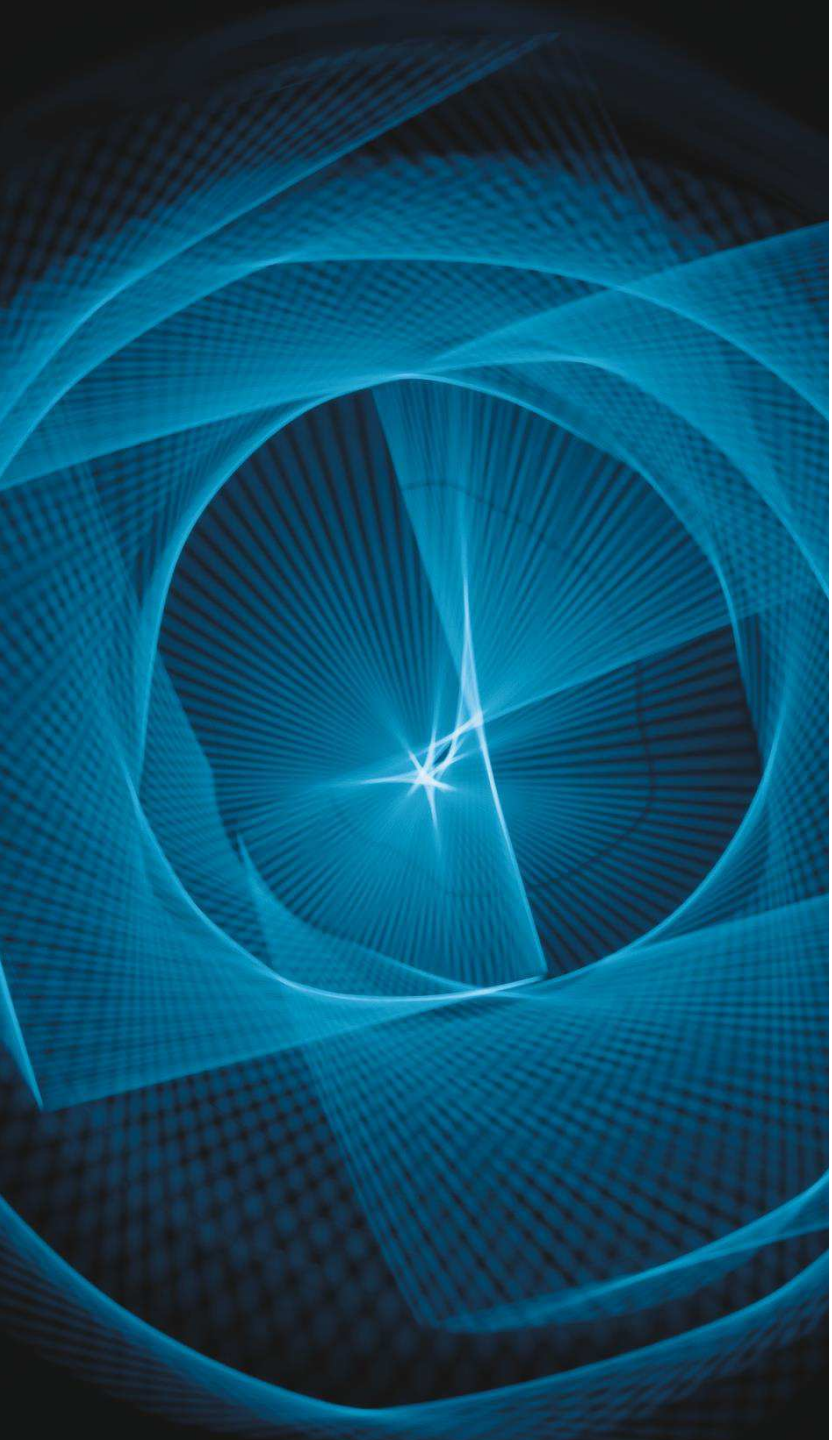
facebook.com/
oxfordcomputergroup

LinkedIn



Oxford Computer Group
US

Get the latest on,
new events,
webinars, white
papers, news, and
more.



Thank you!